

# MONTHLY MEMBERSHIP PROGRESS REPORT

District 49 B

Results as of: 4/30/2024

GMT:

LOCATION ALASKA

GMT CA

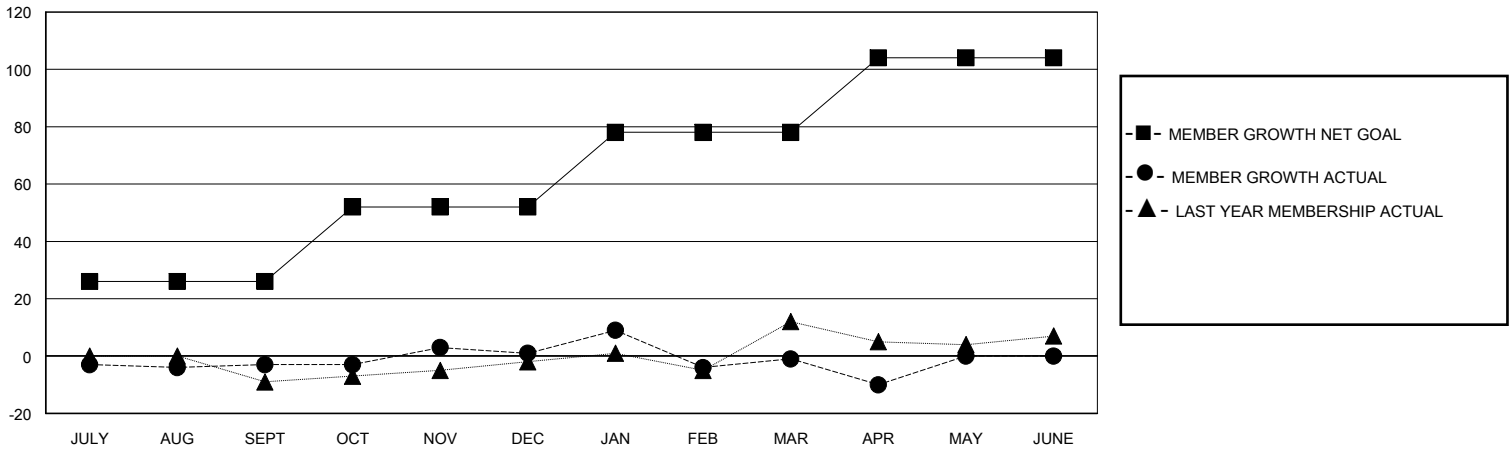
Clubs			
RESULTS FOR 2023-2024			
QUARTER	NEW CLUB GOAL	NEW CLUBS	DROPPED CLUBS
JULY/AUG/SEPT	0	0	0
OCT/NOV/DEC	0	0	0
JAN/FEB/MAR	0	0	0
APR/MAY/JUNE	1	0	0

Members			
RESULTS FOR 2023-2024			
QUARTER	MEMBER GROWTH NET GOAL	MEMBER GROWTH ACTUAL	DROPPED MEMBERS ACTUAL (including transfers)
JULY/AUG/SEPT	26	7	10
OCT/NOV/DEC	26	16	12
JAN/FEB/MAR	26	22	23
APR/MAY/JUNE	26	10	17

GOALS AND ACTUAL NEW CLUBS CUMULATIVE



GOALS AND ACTUAL MEMBERS CUMULATIVE



DROPPED CLUBS: 0	13 CLUBS OF 26 ADDED 1 OR MORE NEW MEMBERS	<b>GENDER DISTRIBUTION</b> MALE 438 (59.67%) FEMALE 296 (40.33%)
<b>DROPPED MEMBERS</b> DECEASED 4 CLUB CANCELLED 0 OTHER 58 TOTAL 62	<a href="#">CLICK HERE FOR CUMULATIVE MEMBERSHIP DATA</a>	TOTAL FAMILY UNIT MEMBERS 159 FAMILY MEMBERS PAYING HALF DUES 82